



WELCOME BACK REMINDERS

SU 2023/2024

Dear Families

I hope that you have all had a restful and happy holiday. Here at East Hunsbury Primary School, we have been very busy during the summer holidays planning for and improving the school environment - we are very excited to show you all the new facilities.

I just wanted to write to you to remind you of a few important things, prior to September 6th when the children return. It is these things that help us to keep the school running smoothly and safely. They are just reminders and if you do have any questions about them, please do not hesitate to ask. I hope you find them useful.

Thank you in advance for your support and understanding as we head into academic year 2023-2024!

In this newsletter we will cover:

- Registration
- Parking
- Communication
- Walk in Wednesday
- Uniform
- School grounds

REGISTRATION TIME

The school day timings from September will be **08.40am - 3.30pm**. The register will be taken at 08:55am – all children must be in school by this time, ready to learn (not arriving). This means that their coats and bags need to be away and they are in their classroom ready. School gates will open at 08:40am.

Children arriving after 8.55am will be marked as 'late' in the register and this will affect their overall attendance marks.

Children arriving after 9am will be marked as 'unauthorised absence,' this will also affect their overall attendance marks.

BEHAVIOUR

We take the behaviour of our children and school community very seriously. As we start the new year, I ask that you read our **Behaviour Policy**, and discuss it with your child so that our expectations are clear.

Here is a link to our **Parent Code of Conduct**.



BE KIND

WORK HARD

BELIEVE

PARKING

You are **NOT** allowed to drive in to, or park, in our car park unless you have a **clearly displayed** disabled blue badge or EHPS Green Parking Permit. Please note, that over the next few weeks we will be reissuing all EHPS parking permits so please look out for more information. If you can walk with your child, please do and you must always park considerately and respectfully.

COMMUNICATION AND CONTACT DETAILS

Please make sure that we have all of your correct details registered with our school office – this is very important, especially in the case of an emergency.

Please also make sure that you are signed up to Class Dojo, as this is the main form of communication we will use to communicate class and year group information to you. We will use our email system, Arbor, to let you know about whole school events. We will try to keep our emails and letters to a manageable amount whilst ensuring that you are always well informed.



WALK IN WEDNESDAY

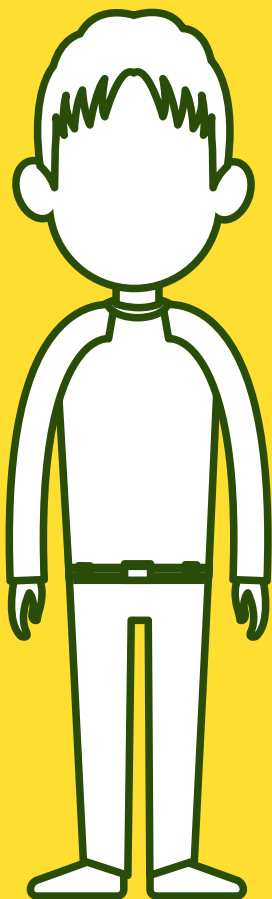
Last term, we ran a parent survey and one of the things that was raised was about the regularity of Walk in Wednesday and how some parents can't always make it and the impact that this can have on their children. However, we also acknowledge that some families really like the opportunity to spend some time with their child in their classroom.

Therefore, we are compromising and will be running Walk in Wednesday once a half term rather than weekly. It will still mainly be focussed on reading but from time to time there may be a little theme e.g. Christmas crafts. The session will run from: 08:40am-9:15am. Dates for these will come out shortly.

SCHOOL UNIFORM

We have high expectations of the children including their uniform. Please see below our uniform requirements. We are aware that some children have physical or sensory issues relating to clothing and we will support and work with you on this. Please inform the class teacher if there are any issues impacting your child and their school uniform

MAIN UNIFORM



- **Jewellery: a pair of small gold or silver studs / sensible, non-electronic watch.**
 - **Green E.H.P.S logo sweatshirt/cardigan or logo fleece jacket or plain bottle green sweatshirt/cardigan**
- **Green, white or yellow polo shirt (logo or non-logo) Reception to Y5 only**
 - **White shirt/blouse and tie – Y6 only**
- **In the summer term: Grey, knee length shorts or bottle green-check summer dresses.**
 - **Grey trousers, skirt or pinafore**
- **Socks - grey, white or black. Tights - grey or bottle green**
- **Flat-heeled black shoes that are polishable and sturdy (not trainers or fashion shoe e.g. vans, Nike, canvas etc). Sensible, plain black ankle boots are also allowed.**

PLEASE NOTE

- Plain hair bands, clips and bobbles are allowed in school colours (bottle green, yellow or black). Children are not permitted to wear brightly coloured or fashion hair accessories.
- Plain stud earrings only.
- Polo tops and shirts should be tucked in (excluding PE uniform). If your child is struggling to do this, staff will of course help them and/or model how to do this.

Coats: The school encourages children to spend as much time outdoors as possible, even in inclement weather conditions. Therefore, coats that are suitable to the weather conditions are required. There are no restrictions as to the type of coat worn, however it is strongly advised that they are waterproof in nature.

PHYSICAL EDUCATION

On the days when children have PE they should attend school in their PE kit.

PE KIT



- Jewellery: all jewellery must be removed prior to the school day.

- Plain black hoodie/sweatshirt or black and white high neck top (logo or non-logo) or green E.H.P.S logo sweatshirt/cardigan or plain bottle green sweatshirt/cardigan

- Plain black t-shirt (non-logo) or black and white t-shirt with school logo

- Plain black skort (non-logo) or black and white skort with school logo

- Plain black jogging bottoms (school logo or non-logo) or plain black leggings (non-logo)

- Plain black socks

- Plain black trainers or white trainers (no bright laces, logos or soles).



PE Kit should be worn for after school sports clubs, unless told otherwise.

Long hair must be tied up on PE days.

[Click here to access our uniform policy](#)



SCHOOL GROUNDS

Forestry area and Gym Equipment

You will notice that we have had new forestry equipment installed where the old trim trail used to be. Please note that children are not permitted to go on this equipment (including pre-school children) before or after school. If you are waiting to collect your child, please do not let any siblings go on here as we want the equipment to last for a very long time. We are seeking a grant to get a fence installed.

This is the same for our outdoor gym equipment near the all-weather pitch.

Scooters, bikes and dogs

Scooters and bikes (including balance bikes) are not allowed to be ridden on school premises. Please ensure that your child walks their scooter or bike when entering the grounds.

Also, dogs (unless they are service dogs) are not permitted on school grounds and, if left outside near the gates, must be supervised.

NEW INTAKE, FACEBOOK & WEBSITE

Please [click here](#) to book a New Intake Tour if you have a child starting school in September 2024.

[Click here](#) to access our Facebook page where we post lots of information about what we get up to.

Here is a [link to our website](#) where you can find all of our policies and even more school information.

We hope that you have found the above useful and we very much look forward to welcoming you all back to school on 6th September. Our school gates open at 08:40!

Kind regards,

Kathryn Pennington & Lucy Boswell
Headteacher SU Lead



BE KIND

WORK HARD

BELIEVE